

Katie's Bleuette Bib Overalls
For Big Sister Rosette
by Blythe Pelham

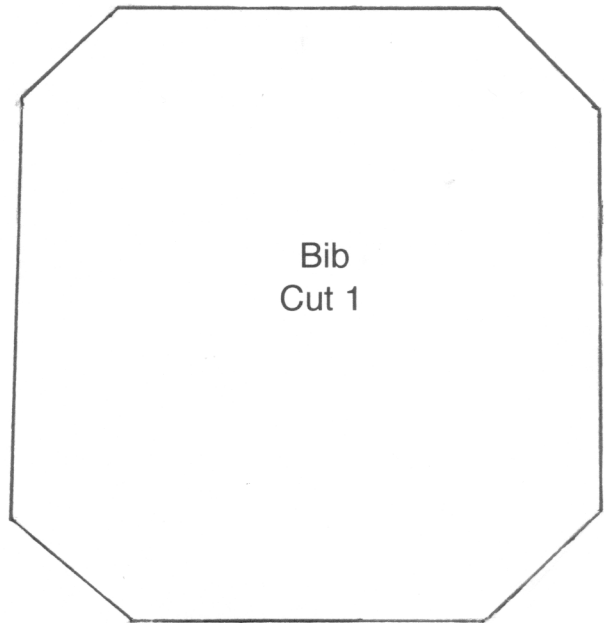
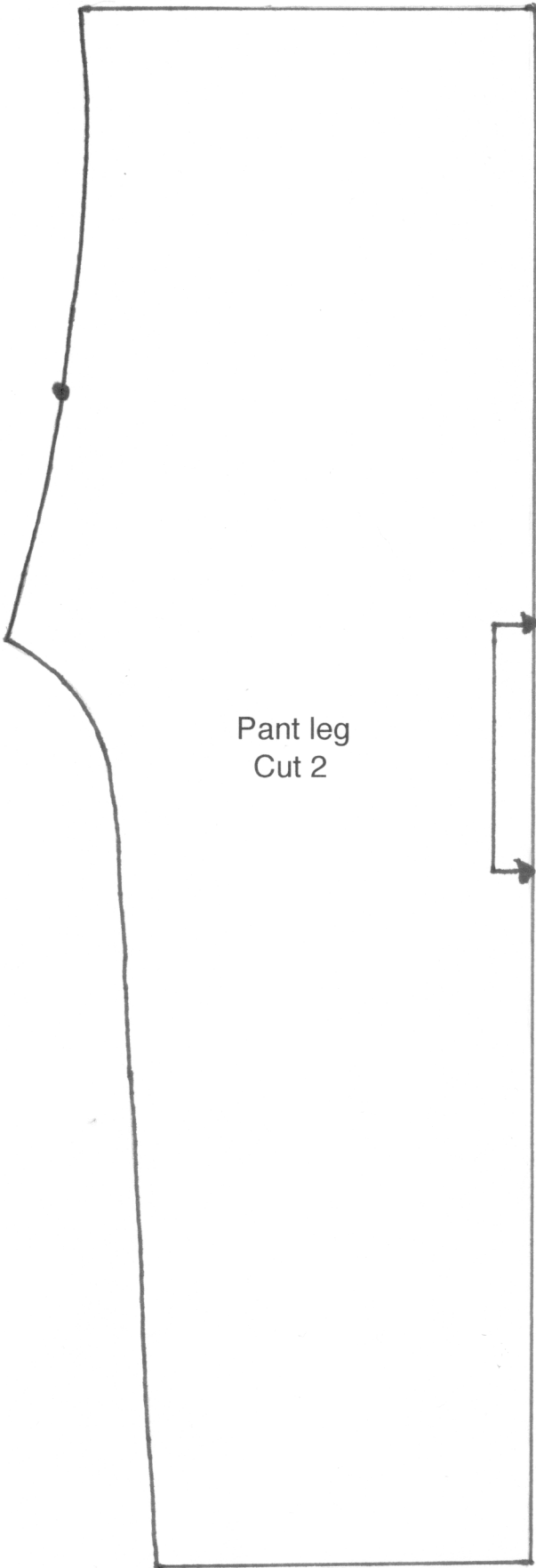
Pattern to be cut with straight of grain.

Cut 2 (two) pant legs on the fold.

Cut one bib.

If desired, reserve fabric for additional bib pocket (see instructions).

Also needed,
12-14 inches of complementary ribbon.



1 inch